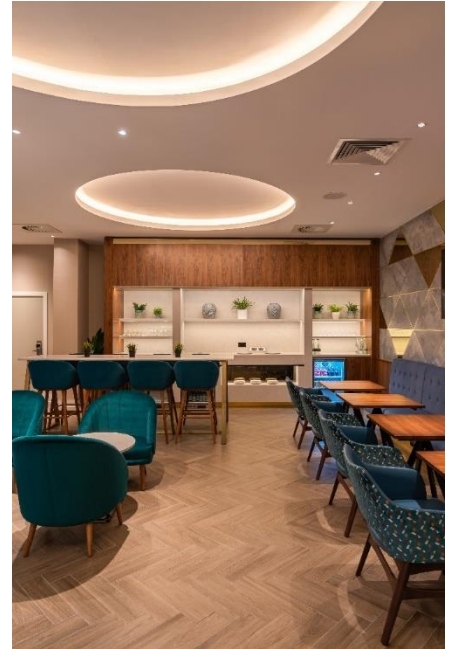


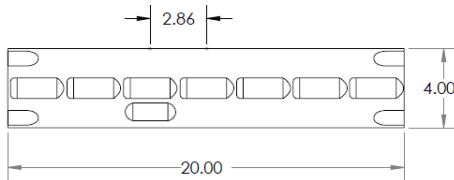
# Integrate Slim

## General Information

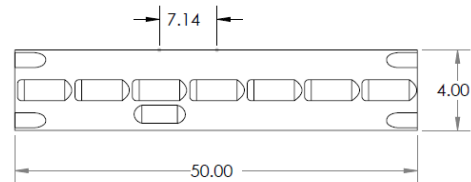
- Flexible LED strip IP20
- 24v DC Constant Voltage
- Beam angle: 120°
- CRI >90
- R9 >65
- Increments 20mm, 50mm
- LED Pitch: 2.85mm, 7.14mm  
LED Increment and pitch dependent on Power p/m
- Lifespan L70: ≥ 50,000 hours
- Dimmable – Mains (Triac) DALI, DMX, 0-10v
- Max Ambient operating temperature (9-10w/m 50°c)
- Integrate fixtures IP40, IP44
- For use with Slim series profiles only
- 6/6, 8/9, 21/9, 8A8
- 5 Year warranty



9w/m – LED Increment 20mm LED pitch 2.85mm



10w/m – LED Increment 50mm LED pitch 7.14mm



| Integrate<br>LED Code | CCT   | 9w/m | 10w/m |
|-----------------------|-------|------|-------|
|                       |       | lm/m | lm/m  |
| SL                    | 2200k | 620  | 850   |
| SL                    | 2500k | 650  | 880   |
| SL                    | 2700k | 675  | 918   |
| SL                    | 3000k | 710  | 955   |
| SL                    | 4000k | 740  | 985   |

Note: -40% light loss with Opal cover

### About the Light source:

24v, flexible LED strip with reflective, white surface and 3M adhesive tape on the back. Homogeneous light source for Slim series fixtures Bridgelux LEDs of the highest quality. 120° beam angle.

“One Bin Only” within 3 MacAdam

Integrated Constant Current technology to guarantee Constant color and Intensity over from first to last LED over lifetime

### About the Fixtures:

A portfolio of Aluminium Recessed, Surface Mounted, Suspended or Plaster-In profiles, covers and mounting accessories for Interior, Exterior architectural and commercial applications.

(See separate pdf catalogue and specification builder for options)