

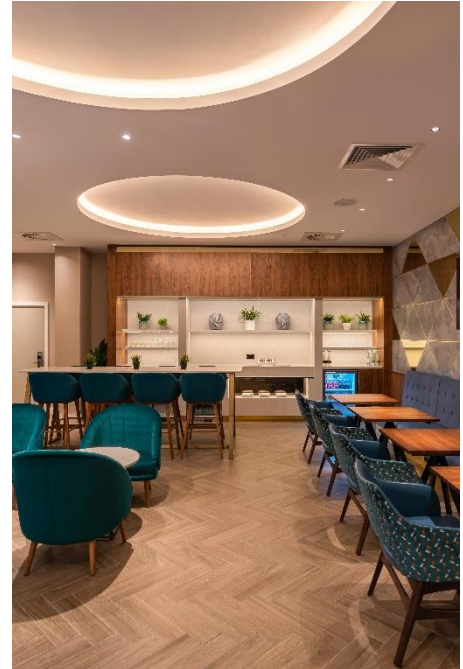


ARCHITECTURAL FX

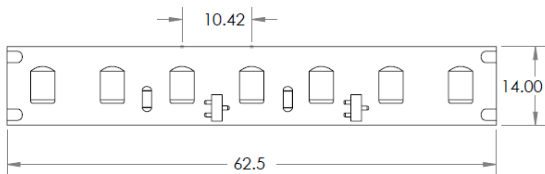
# Integrate SPI (RGB & RGB W Pixelated)

## General Information

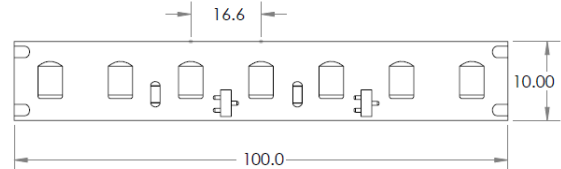
- Flexible LED strip IP20
- 24v DC Constant Voltage
- Beam angle: 120°
- CRI >95
- R9 >90
- Increments 62.5mm
- LED Pitch: 10.42mm
- Lifespan L70: ≥ 36,000 hours
- Dimmable – DMX (SPI De-Code required)
- Max Ambient operating temperature (14.4w/m 50°c)
- Integrate fixtures IP40, IP44
- **5 Year warranty**



15.4w/m LED Increment 100mm LED Pitch 16.6mm



22w/m LED Increment 62.5mm LED Pitch 10.42mm



Integrate LED Code	CCT	15.4w/m lm/m
<b>RGB</b>		
<b>RGB W</b>	2400k	360
<b>RGB W</b>	2700k	391
<b>RGB W</b>	3000k	415

Note: -40% light loss with Opal cover

### About the Light source:

24v, flexible LED strip with reflective, white surface and 3M adhesive tape on the back. Homogeneous light source for fixtures with Opal covers <15mm from LED to Opal cover. Bridgelux LEDs of the highest quality. 120° beam angle.

“One Bin Only” within 2 MacAdam

Integrated Constant Current technology to guarantee Constant color and Intensity over from first to last LED over lifetime

### About the Fixtures:

A portfolio of Aluminium Recessed, Surface Mounted, Suspended or Plaster-In profiles, covers and mounting accessories for Interior, Exterior architectural and commercial applications.

(See separate pdf catalogue and specification builder for options)