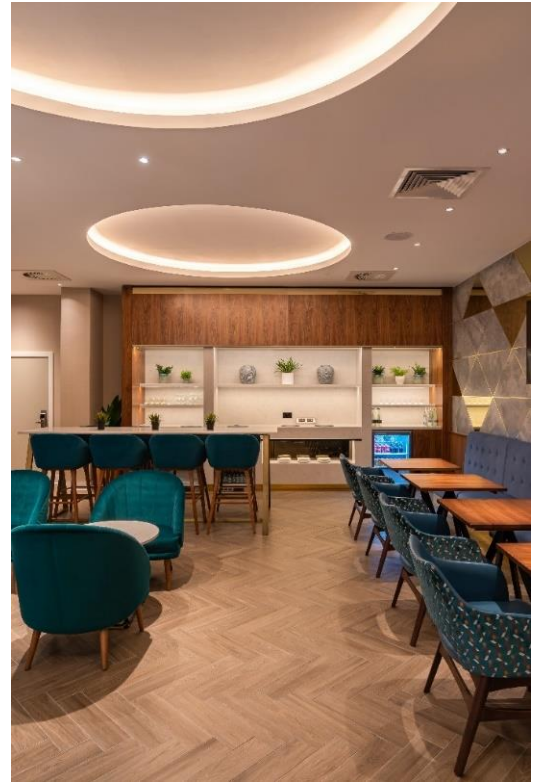
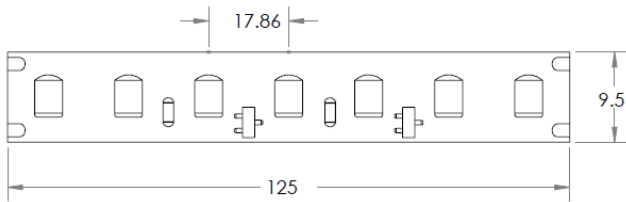


# Integrate HLD

## General Information

- Flexible LED strip IP20
- 24v DC Constant Voltage
- Beam angle: 120°
- CRI >90
- R9 >50
- Increments 125mm
- LED pitch: 17.86mm
- Lifespan L80: ≥ 60,000 hours
- Dimmable – Mains (Triac) DALI, DMX, 0-10v
- Max Ambient operating temperature (5-15w/m 50°C, 25w/m 45°C, 36w/m 35°C)
- Available IP40, IP44, IP67
- 7 Year warranty (Limited to 5,000hrs per year running)



Integrate LED Code	CCT	5w/m	10w/m	15w/m	25w/m	40w/m
		lm/m	lm/m	lm/m	lm/m	lm/m
HLD	2000k	400	800	1280	2090	x
HLD	2200k	460	920	1470	2380	x
HLD	2500k	520	1050	1680	2720	3440
HLD	2700k	470	1110	1780	2890	3740
HLD	3000k	480	1180	1890	3070	3980
HLD	3500k	490	1240	1980	3220	4230
HLD	4000k	500	1270	2030	3290	4340
HLD	5000k	690	1380	2210	3600	4350

Note: -40% light loss with Opal cover

### About the Light source:

24v, flexible LED strip with reflective, white surface and 3M adhesive tape on the back. Homogeneous light source for fixtures with Opal covers <15mm from LED to Opal cover. Nichia LEDs of the highest quality. 120° beam angle.

“One Bin Only” within 3 MacAdam

Integrated Constant Current technology to guarantee Constant color and Intensity over from first to last LED over lifetime

### About the Fixtures:

A portfolio of Aluminium Recessed, Surface Mounted, Suspended or Plaster-In profiles, covers and mounting accessories for Interior, Exterior architectural and commercial applications.

(See separate pdf catalogue and specification builder for options)