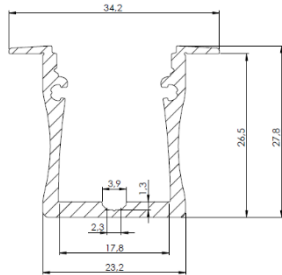
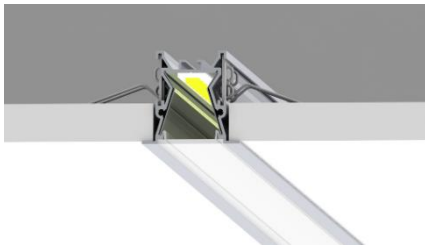




ARCHITECTURAL FX

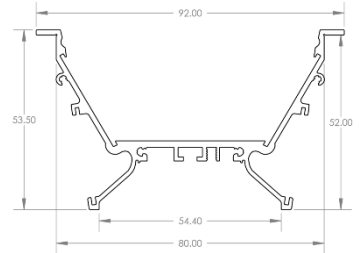
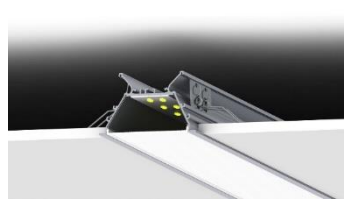
Integrate Aluminium Profiles Recessed

RSLW 20 FL



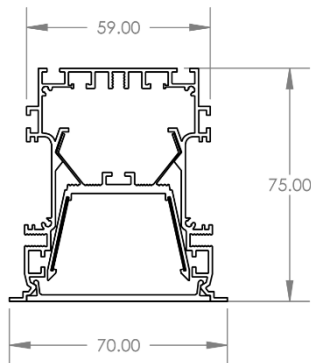
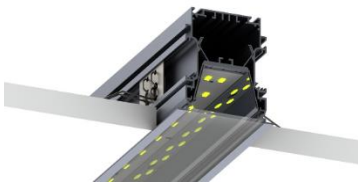
36mm x 34.3mm
Recessed mounted, Direct only, IP40
Low Opal or Frosted Cover
(for use with LED up to 25w/m)

RPLW80 FL



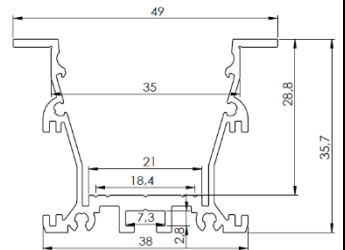
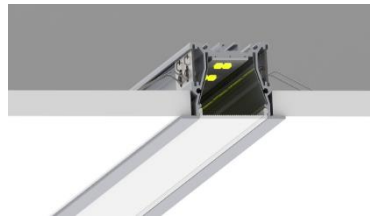
92mm x 55.6mm
Recessed mounted, Direct only, IP40
Low Opal or Frosted Cover
(for use with LED up to 60w/m)

RPL 55



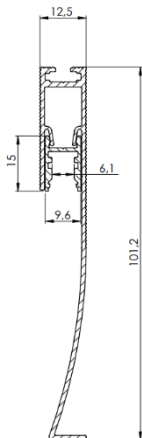
70mm x 75mm
Recessed mounted, Direct only, IP40 (2part install)
Low Opal or Honeycomb lens
(for use with LED up to 60w/m)

RPL 35 FL



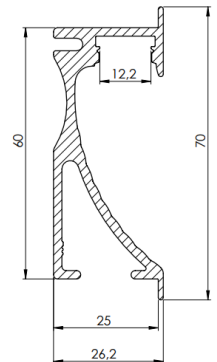
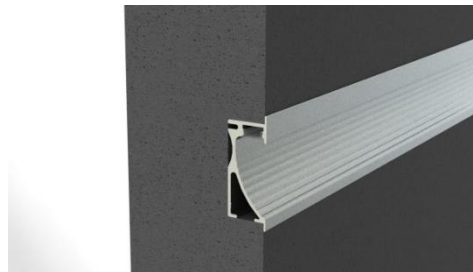
48mm x 35.7mm
Recessed mounted, Direct only IP40
Low Opal or Frosted Cover
(for use with LED up to 60w/m)

Alu Bb



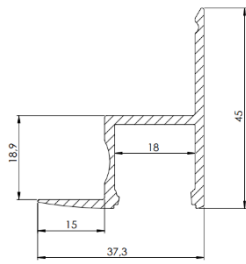
12.5mm x 101mm
Indirect only (2 part install)
Low Opal or Frosted Cover IP40
(for use with LED up to 15w/m)

Alu W



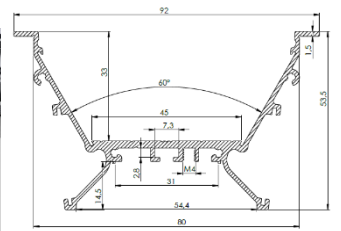
26.2mm x 70mm
Indirect only IP40
Low Opal or Frosted Cover
(for use with LED up to 25w/m)

Alu C



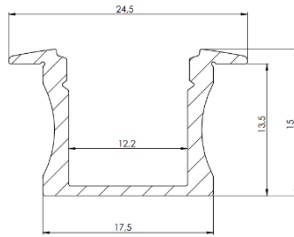
45mm x 37mm
Surface mounted, Direct only IP40
Low Opal or Frosted Cover
(for use with LED up to 15w/m)

RPLW 80



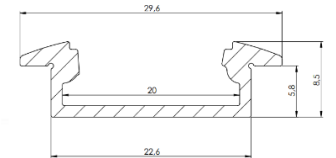
92mm x 40mm
Recessed mounted, Direct only IP40
Low Opal or Frosted Cover
(for use with LED up to 60w/m)

RSL 15



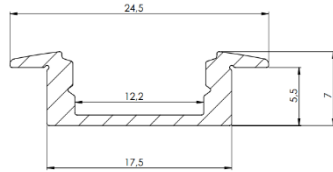
15mm x 24.5mm
Recessed mounted, Direct only IP40
Low Opal or Frosted cover
(for use with LED up to 15w/m)

RSL W8



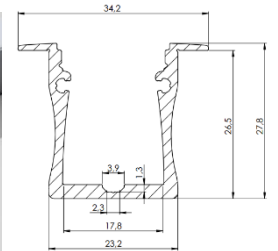
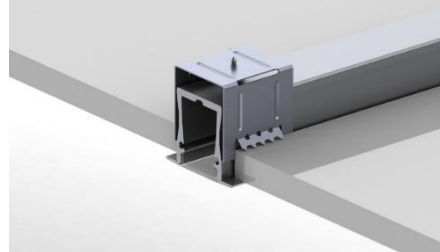
8.47mm x 29.6mm
Recessed mounted, Direct only IP40
Low opal or Frosted cover
(for use with LED up to 15w/m)

RSL 7



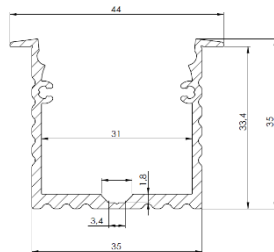
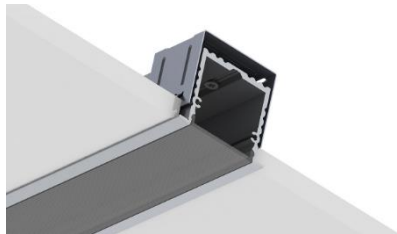
7mm x 24.5mm
Recessed mounted, Direct only IP40
Low Opal or Frosted cover
(for use with LED up to 15w/m)

RSLW20



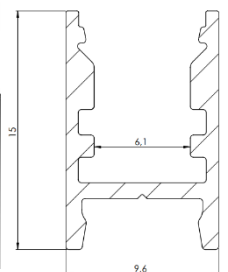
27.8mm x 34mm
Recessed mounted, Direct only IP40
Low Opal cover
(for use with LED up to 25w/m)

Alu Asy



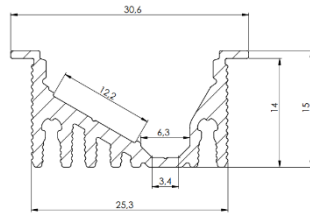
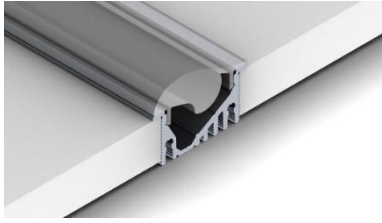
35mm x 35mm
Recessed mounted, Direct only
Low opal or Frosted cover, Black Light Diffuser
(for use with LED up to 60w/m)

Alu S



9mm x 15mm
Recessed mounted, Direct only
Opal, Frosted cover
(for use with LED up to 10w/m) (*4mm wide Slim tape only*)

RPLA



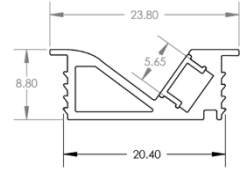
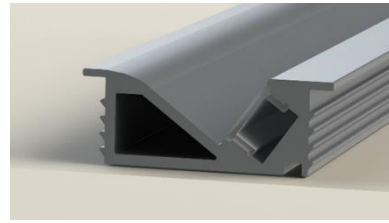
30mm x 22mm

Recessed only, Asymmetric distribution Direct only IP40

Frosted Cover

(for use with LED up to 25w/m)

R 219



21mm (23.8mm) x 8.8mm

Recessed only, Asymmetric distribution Direct only IP40

Opal cover

(for use with LED up to 10w/m) (***4mm wide Slim tape only***)